



## Remember Moving Into Your First Home? Imagine Doing It Without the Support of a Loving Family

That's the reality for youth exiting the foster care system. But you can step in just in time -- like a family member would -- to provide the essentials needed to establish a safe, stable place to call home.

My First Home is focused on collecting essential household items that give youth a solid foundation. Together with your friends, family, work colleagues, club, church or temple, you can collect our most-needed NEW items that help turn empty apartments into warm homes and give youth something that's truly their own:

- ◆ Target/Walmart Gift Cards
- ◆ Queen Size Bedding/Sheets
- ◆ Queen Size Comforters
- ◆ Bathmats and Towels
- ◆ Vacuums
- ◆ Toasters
- ◆ Cleaning Supplies
- ◆ Microwaves
- ◆ Tupperware Sets
- ◆ Knives & Cutting Boards
- ◆ Pots & Pans
- ◆ Dish Sets
- ◆ Silverware
- ◆ Glassware
- ◆ Lamps
- ◆ Irons/Ironing Boards

**You can also donate online by visiting [bit.ly/jitmfh](https://bit.ly/jitmfh)**

All donations are tax-deductible



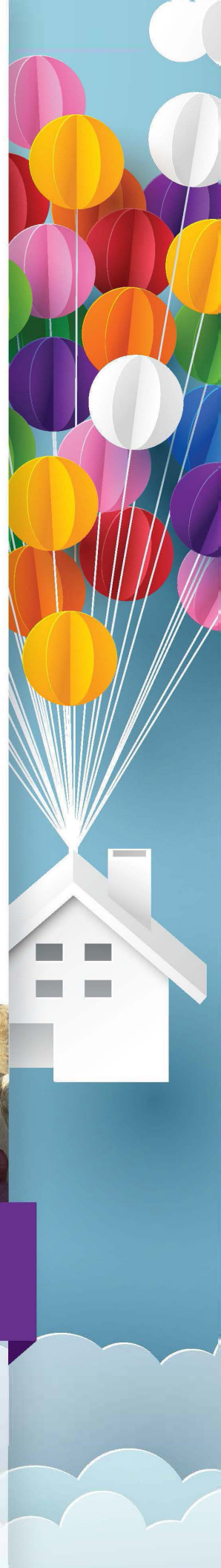
To get started on your mini-drive, please contact

**Alyssa Player**

**[myfirsthome@jitfosteryouth.org](mailto:myfirsthome@jitfosteryouth.org) | 619-657-6954**



*Our mission is to engage a caring community to help transition age foster youth achieve self-sufficiency and well-being.*





## Frequently Asked Questions

### What is Just in Time?

Just In Time for Foster Youth (JIT) is an organization that provides transition age foster youth (ages 18-26) with emergency support, essential resources and caring personal guidance at critical junctures on their path to self-sufficiency and well-being. Our vision is a future in which every youth leaving the foster care system has a community of caring adults waiting for them after 18.

### How can I briefly explain to people the cause that I am supporting?

"I am supporting Just in Time for Foster Youth's My First Home service to help transition age foster youth, who lack family support, turn their empty apartments into safe and comfortable homes."

### What's most needed?

Target gift cards are most preferred. Part of the process of learning to be independent is making decisions on the purchasing of household items, plus it's lots of fun to decorate your first home! If you are collecting physical items, we recommend focusing on 2-3 of them at a time.

### Why new items?

Our goal is to raise the self-esteem of our youth. Former foster youth have often never had new things and it's incredibly empowering when they feel they have items that are truly their own.

### Can you come speak to our group?

We'd be happy to speak to your group about the mini-drives and provide a guest speaker who's been a recipient of My First Home donations.

**To request flyers, in-kind donation forms, a speaker,  
or to get started on your mini-drive, please contact**

**Alyssa Player**

[myfirsthome@jitfosteryouth.org](mailto:myfirsthome@jitfosteryouth.org) | 619- 657-6954



Mail: PO Box 601627, San Diego, CA 92160  
Office: 4560 Alvarado Canyon Road, Suite 2G, San Diego, CA 92120  
Non-profit 501(c)(3) • Federal Tax ID# 20-5448416